



COMPANY WITH  
QUALITY SYSTEM  
CERTIFIED BY DNV GL  
= ISO 9001 =

**COLLETORE OLIO**  
**OIL MANIFOLD**  
**ÖLVERTEILERBLOCK**

CODICE/CODE/CODE

**CMA0150-CB-0**    **-OL**

N° STAZIONI  
NO. OF STATIONS  
ANZAHL STATIONEN

- \* **A**- alluminio (standard)
- S**- acciaio (su richiesta)
- X**- acciaio inox (su richiesta)
- \* **A**- aluminium (standard)
- S**- steel (on request)
- X**- stainless steel (on request)
- \* **A**- aluminium (standard)
- S**- stahl (auf Anfrage)
- X**- edelstahl (auf Anfrage)

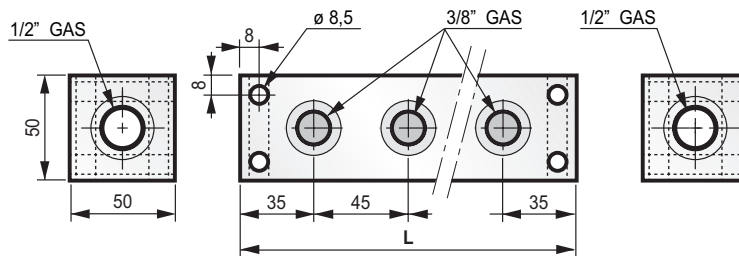
N° (N° STAZIONI) (No. OF STATIONS) (ANZAHL STATIONEN)	L	PESO WEIGHT GEWICHT kg
<b>2</b>	115	0,63
<b>3</b>	160	0,89
<b>4</b>	205	1,16
<b>5</b>	250	1,42
<b>6</b>	295	1,69
<b>7</b>	340	1,96
<b>8</b>	385	2,22
<b>9</b>	430	2,49

**COLLETORE SCHEMA PARALLELO**  
**PARALLEL SCHEME MANIFOLD**  
**VERTEILERBLOCK MIT PARALLELSCHEMA**



FOTO/PICTURE/PICTURE

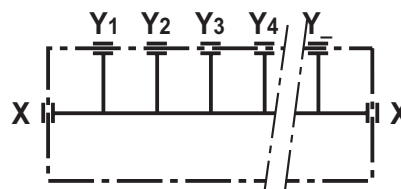
**CMA0150-CB-05-OL**



**MASSIMA PRESSIONE DI LAVORO: 250 BAR (LEGA DI ALUMINIO)**  
**MAXIMUM OPERATING PRESSURE: 250 BAR (ALUMINIUM ALLOY)**  
**MAXIMALER BETRIEBSDRUCK: 250 BAR (ALUMINIUMLEGIERUNG)**

**TRATTAMENTO SUPERFICIALE ALLUMINIO: ANODIZZAZIONE NEUTRA SATINATA**  
**ALUMINIUM SURFACE TREATMENT: NEUTRAL SATIN ANODIZING**  
**OBERFLÄCHENBEHANDLUNG ALUMINIUM : NEUTRAL SATIN ANODISIERUNG**

SCHEMA - DIAGRAM - SCHEMA



via S. Quirico, 201/H  
50013 Campi Bisenzio - FI  
www.oleorama.it  
oleorama@oleorama.it  
export@oleorama.it